



## Island Express



### 170' (51.8 m) MARINER MARINE

<b>LOA:</b>	170' (51.8 m)	<b>Year:</b>	Mfg-1999 Model-1999
<b>Beam:</b>	36' (11.0 m)	<b>Mfg:</b>	MARINER MARINE
<b>Draft:</b>	Max 7' (2.1 m)	<b>Type:</b>	Commercial Vessel
<b>Speed:</b>	/ 11 knots	<b>Price:</b>	1,900,000 USD
<b>Location:</b>	Fort Lauderdale, Florida, United States		

## Additional Specifications For Island Express:

---

<b>LOA:</b>	170' (51.8 m)	<b>Year:</b>	Mfg-1999 Model-1999
<b>Mfg. Length:</b>		<b>Mfg:</b>	MARINER MARINE
<b>Beam:</b>	36' (11.0 m)	<b>Model:</b>	Landing Craft
<b>Draft:</b>	Max 7' (2.1 m)	<b>Type:</b>	Commercial Vessel
<b>Hull Mtrl:</b>	Steel	<b>Top:</b>	
<b>Hull Cnfg.:</b>		<b>Speed:</b>	/ 11 knots
<b>Hull Designer:</b>		<b>Engines:</b>	2xCaterpillar
<b>Deck Mtrl:</b>	Steel		3412
<b>Tonnage:</b>	422		671 HP
<b>Range:</b>		<b>Engines Year:</b>	
<b>Fuel Cap:</b>	40000 g (151400 l)	<b>Staterooms:</b>	3
<b>Water Cap:</b>	15000 g (56775 l)	<b>Sleeps:</b>	9
<b>Holding Tank:</b>	2000 g (7570 l)	<b>Heads:</b>	2
<b>Flag:</b>	St. Kitts	<b>Crew Quarters:</b>	
<b>Location:</b>	Fort Lauderdale, Florida, United States	<b>Crew Berths:</b>	
		<b>Captain Cabin:</b>	Yes
		<b>Price:</b>	1,900,000 USD

---

### Accommodations

Captains Quarters complete with head, cabinets and shelving.  
Two Crew Cabins  
Sleeps 9

### Deck Equipment

Ramped Bow 20'X22'  
6,152 Open Cargo Deck  
Kedging stern anchor spud

### Electronics and Navigational Equipment

(2) ACR SR103 Portable Radio  
(3) Standard Horizon portable two way VHF radios  
Furuno FM-8500 Radio Telephone  
Furuno FM-1652 MF/HF Radio  
Furuno DSC6 DSC Encoder  
Furuno DP6 DSC watch Receiver  
Furuno Felcom inmarsat equipment  
JRC-JMA3806 Radar  
JRC NRC 300A Navtex receiver  
ACR 406 Epirbs  
Datamarine 3001 Depth Sounder  
Trimblent 200 GPS  
Anschutz Pilot Star D Auto Pilot  
Ritchie Compass

### Galley

Stainless Steel Dual Sink

---

#### St. Johns Ship Building

560 Stokes Landing Road Palatka, 32177  
Phone: 954-822-0351, Email: stjohnsbrokerage@aol.com  
URL: <http://www.stjohnsshipbuilding.com>

#### *Island Express*

12/22/2009

Page 2

Custom Upright Freezer  
(2) Custom Upright Refrigerators  
Four burner range with oven  
Microwave  
Galley Table

## **Engine /Mechanical Equipment**

Two (2) Caterpillar Diesel 3412 671 HP

Generators: Two (2) John Deere  
65 kw each  
6 cylinder  
Geared 12 volt starter with glow plugs

Engine Room is complete with ballast, fire fighting and oil pumps, reinforced bulkheads with watertight doors.

Engine room is protected with CO2 System.

## **Safety And Fire Protection**

(10) Ten hand held fire extinguishers  
Flare Kits VDS  
Horn  
Navigational lights and all around white lights  
Rescue Boat  
Life Raft  
Fire hoses stations at deck, accommodation and machinery spaces  
Smoke sensors  
First Aid Kits

## **Disclaimer**

Disclaimer: Particulars and specifications are as supplied by the Vendor therefore St. Johns Ship Building, Inc. does not accept responsibility for their accuracy. Utmost care however is taken in compiling this document. No warranty expressed or implied.

## Galley



## Galley



## Pilothouse



## Pilothouse



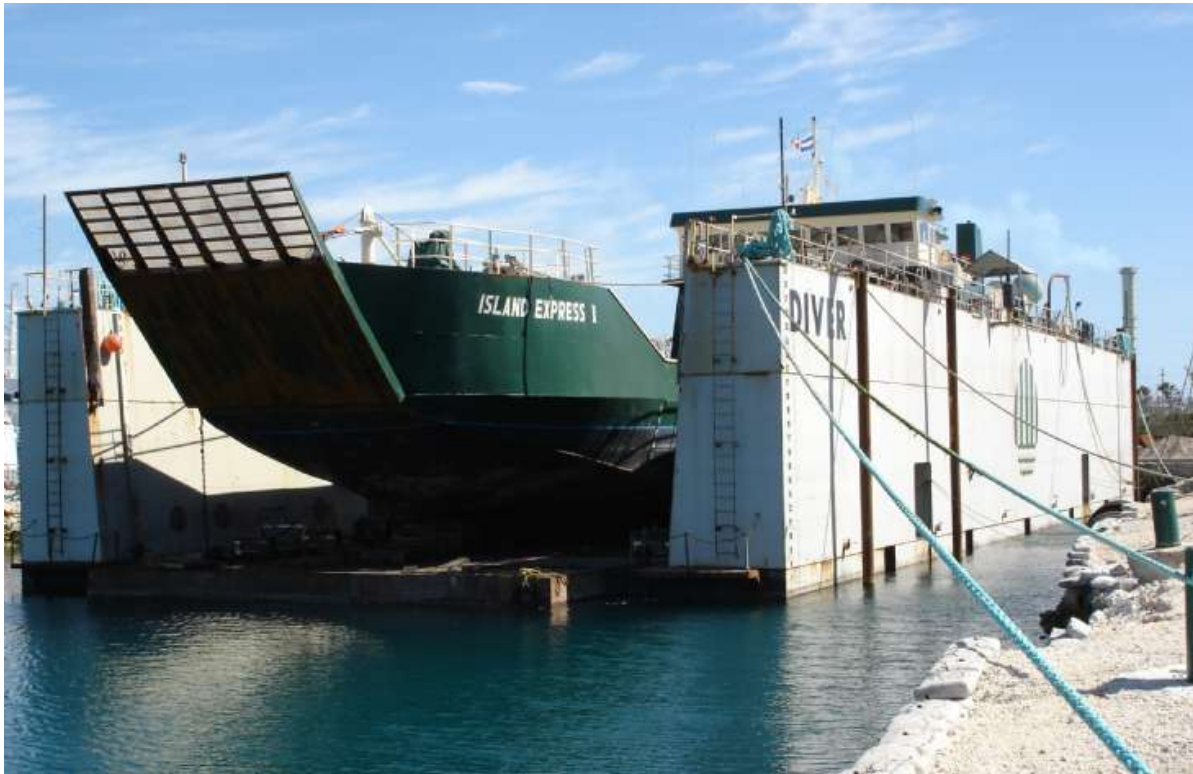
## Engine /Mechanical Equipment



## Engine /Mechanical Equipment



## Deck Equipment



## Deck Equipment

